

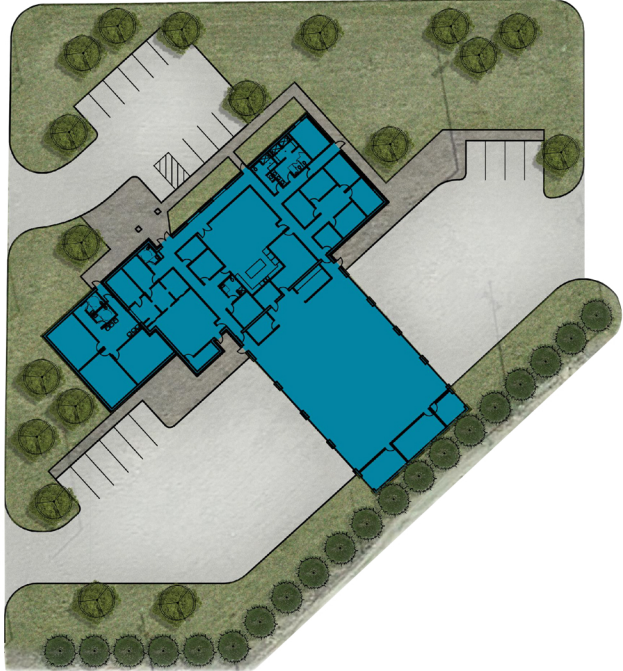
Proposition C

Fire Station No. 2 Relocation

at I-27 & Dimmit HWY • \$5,325,000



Public Facilities



Current Conditions

- Original Station built in 1951. Located at 911 Quincy St.; Facility Size: Approx. 5,807 sq. ft.
- Houses Fire Administration, Fire Marshall's Office and Fire/EMS Company
- Primary Station for Emergency Medical Services due to central location (Station 3 provides backup EMS response)
- Station has a single means of ingress/egress for Fire Engine and Ambulance. Requires fire trucks and ambulances to back into the Station from a State Controlled Highway
- Limited expansion ability to accommodate a standard length ladder truck or a standard length engine
- ISO Assessment performed in 2011 recommends all parts of city limits to be within 1.5 miles from a fully equipped engine company; Currently, there is overlap in fire coverage between - Station No. 2 and the other Fire Stations

Proposed Project

- Proposed new location would be at Interstate 27 and Dimmitt Highway
- 14,500 sq. ft. building with living quarters, multi-purpose training room, fire administration, four bays
- Fire Station would provide better coverage to the North and for the proposed business park and reduce overlap between stations
- Meets minimum ISO recommendations for Fire Station locations
- Comprehensive Plan Project – Chapter 2.0 Growth and Capacity, Strategy 2.5.1; Chapter 5.0 Public Facilities, Strategy 5.2.1

BALLOT PROPOSITION C

THE ISSUANCE OF \$5,325,000 OF GENERAL OBLIGATION BONDS OF THE CITY OF PLAINVIEW, TEXAS, FOR ACQUISITION, CONSTRUCTION, RENOVATION, IMPROVEMENT AND EQUIPMENT OF FIRE STATION NO. 2, AND THE LEVY OF A TAX IN PAYMENT THEREOF