



PLAINVIEW.



# PLAINVIEW, TX

**Citizen Advisory Committee**  
**2017 Capital Improvement Projects**



PLAINVIEW, TX



# The Comprehensive Plan

## Important Dates

---

**October 23, 2017**  
First Day for Early Voting

**November 3, 2017**  
Last Day for Early Voting

**November 7, 2017**  
Election Day

This process started with the adoption of the Comprehensive Plan for the City in 2013. The Comprehensive Plan serves as the framework for guiding the future development, redevelopment and community enhancements over the next 20 years and beyond. In the plan, you will find several major capital improvement projects identified by the community.

In July 2016, the City held a Community Strategy Meeting to discuss these major capital improvement projects identified in the plan as well as provide an update on the progress made with the implementation of the Comprehensive Plan. This meeting led to the City Council appointing a Citizens Advisory Committee to serve as a steering committee for prioritizing the major capital improvement projects proposed over the next 5 year time period. The Citizen Advisory Committee considered projects ranging from quality of life improvements with our parks system to public facilities such as the Police Department as well as mobility improvements with streets and sidewalks.



**Quality of Life**



**Public Facilities**



**Mobility**

This booklet serves as a tool to provide citizens with the information about the proposed projects recommended by the Citizen Advisory Committee.



# Proposition A

## 24th Street Reconstruction Columbia St. to Dimmitt HWY • \$7,150,000



Mobility



### Current Conditions

- Provides access from Interstate 27 frontage road to the eastern City Limits (FM 400)
- It is a four lane minor arterial with a double yellow center strip and white broken lane stripes and a 40 mph speed limit: Classification: M1 Arterial
- Project identified by the Citizen Advisory Committee

### Proposed Project

- Reconstruct 24th Street from Columbia (BI-27) to Dimmitt Highway (State Highway 194)
- Replace Traffic Signals
- Improve pedestrian access with sidewalks and ADA compliant ramps at intersections
- Drainage Improvements at Lexington, Milwaukee and 23rd Street
- Comprehensive Plan Priority – Chapter 3.0, Strategy 3.3.5



## BALLOT PROPOSITION A

THE ISSUANCE OF \$7,150,000 OF GENERAL OBLIGATION BONDS OF THE CITY OF PLAINVIEW, TEXAS, FOR STREET AND DRAINAGE IMPROVEMENTS, INCLUDING 24 TH STREET, AND THE LEVY OF A TAX IN PAYMENT THEREOF

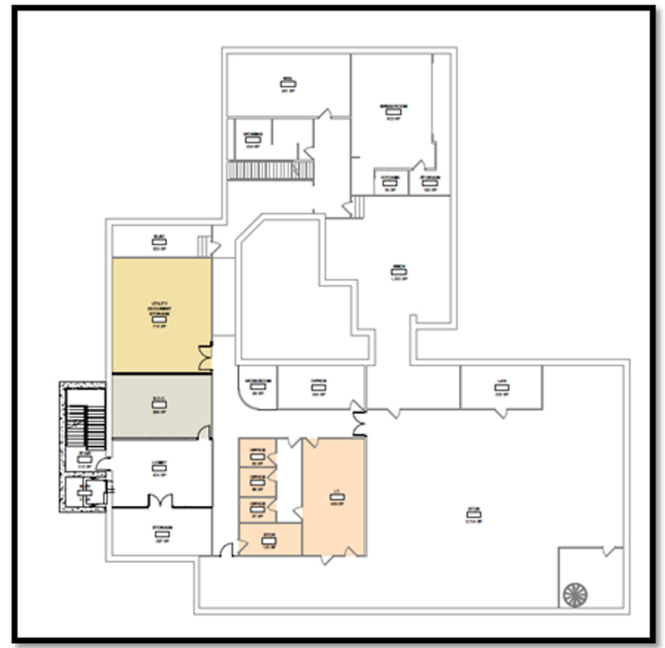


# Proposition B

## City Hall / Police Department Relocation & Renovation • \$6,000,000



### Public Facilities



#### Current City Hall Conditions

- City Hall was Built in 1963 at 901 Broadway; Facility Size: 10,400 sq. ft.
- Finance (Utility) Department – 121 E. 7th Street; Facility Size: 4,080 sq. ft.
- City Hall Services are not all provided at the current City Hall facility
- Space Programming Needs Assessment performed in 2016 – Approximately 13,908 sq. ft. needed to consolidate city services

#### Proposed City Hall Project

- The City would relocate & renovate the downtown Centennial Bank, gifted to the City by Centennial Bank (See Comprehensive Plan)
- Consolidates Finance (Utility) Building with current departments into one location
- Consider relocating Health Department to the new City Hall location if there is adequate space to accommodate this department (1,200 sq. ft. needed)
- Comprehensive Plan – Chapter 5.0 Public Facilities, Strategy 5.1.1

**Police Department Project Details on next page**



**Proposed New City Hall Location**

## BALLOT PROPOSITION B

THE ISSUANCE OF \$6,000,000 OF GENERAL OBLIGATION BONDS OF THE CITY OF PLAINVIEW, TEXAS, FOR ACQUISITION, CONSTRUCTION, RENOVATION, IMPROVEMENT, RELOCATION AND EQUIPMENT OF MUNICIPAL BUILDINGS, INCLUDING A POLICE HEADQUARTERS AND A CITY HALL, AND THE LEVY OF A TAX IN PAYMENT THEREOF

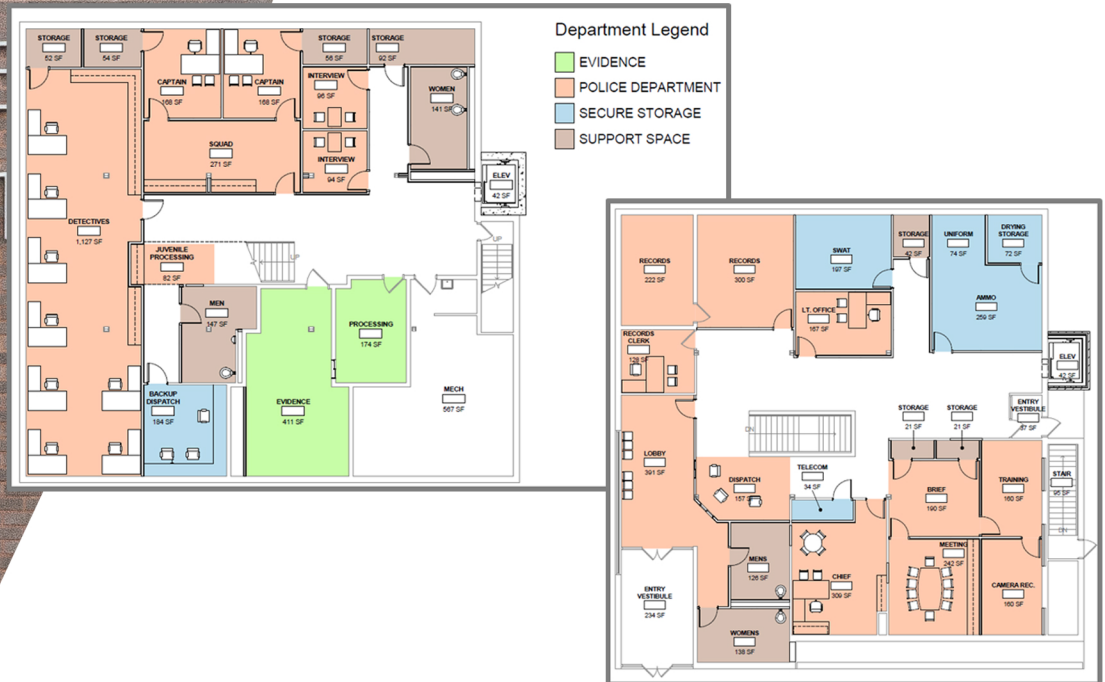


# Proposition B

## City Hall / Police Department Relocation & Renovation • \$6,000,000



### Public Facilities



#### Current Police Department Conditions

- Original PD Station built in 1967; Served as City Jail; Bomb Shelter; 7,512 sq. ft.
- Department has outgrown the available space
- Life expectancies of mechanical equipment and fixtures are nearing the end or have exceeded industry standard limits
- Basement Serves as Emergency Operations Center
- Space Programming Needs Assessment performed in 2016 recommends approximately 8,784 sq. ft. needed for a Police Department facility

#### Proposed Police Department Project

- Relocate Police Department into the current City Hall Building located at 901 Broadway; Renovate structure. Facility size: 10,400 square feet
- Services Provided: Police Administration, Dispatch, Patrol, and Investigation Services
- Upgrade Emergency Operations Center capabilities
- Comprehensive Plan Project – Chapter 2 Growth and Capacity, Strategy 2.5.2; Chapter 5.0 Public Facilities, Strategy 5.2.1



**Proposed New Police  
Department Location**

## BALLOT PROPOSITION B

THE ISSUANCE OF \$6,000,000 OF GENERAL OBLIGATION BONDS OF THE CITY OF PLAINVIEW, TEXAS, FOR ACQUISITION, CONSTRUCTION, RENOVATION, IMPROVEMENT, RELOCATION AND EQUIPMENT OF MUNICIPAL BUILDINGS, INCLUDING A POLICE HEADQUARTERS AND A CITY HALL, AND THE LEVY OF A TAX IN PAYMENT THEREOF



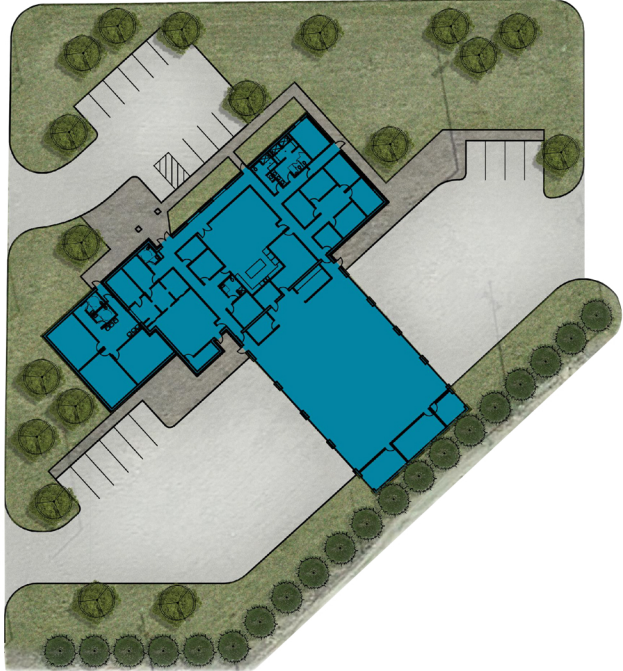
# Proposition C

## Fire Station No. 2 Relocation

at I-27 & Dimmit HWY • \$5,325,000



### Public Facilities



#### Current Conditions

- Original Station built in 1951. Located at 911 Quincy St.; Facility Size: Approx. 5,807 sq. ft.
- Houses Fire Administration, Fire Marshall's Office and Fire/EMS Company
- Primary Station for Emergency Medical Services due to central location (Station 3 provides backup EMS response)
- Station has a single means of ingress/egress for Fire Engine and Ambulance. Requires fire trucks and ambulances to back into the Station from a State Controlled Highway
- Limited expansion ability to accommodate a standard length ladder truck or a standard length engine
- ISO Assessment performed in 2011 recommends all parts of city limits to be within 1.5 miles from a fully equipped engine company; Currently, there is overlap in fire coverage between - Station No. 2 and the other Fire Stations

#### Proposed Project

- Proposed new location would be at Interstate 27 and Dimmitt Highway
- 14,500 sq. ft. building with living quarters, multi-purpose training room, fire administration, four bays
- Fire Station would provide better coverage to the North and for the proposed business park and reduce overlap between stations
- Meets minimum ISO recommendations for Fire Station locations
- Comprehensive Plan Project – Chapter 2.0 Growth and Capacity, Strategy 2.5.1; Chapter 5.0 Public Facilities, Strategy 5.2.1

### BALLOT PROPOSITION C

THE ISSUANCE OF \$5,325,000 OF GENERAL OBLIGATION BONDS OF THE CITY OF PLAINVIEW, TEXAS, FOR ACQUISITION, CONSTRUCTION, RENOVATION, IMPROVEMENT AND EQUIPMENT OF FIRE STATION NO. 2, AND THE LEVY OF A TAX IN PAYMENT THEREOF



# Proposition D

## 16th Street Pool Reconstruction at 16th Street Park • \$3,800,000



Quality of Life



### Current Conditions

- Constructed in 1970s / Approx. 2,500 sq. ft. of surface area
- Approximately - 160 swimmers / 115,000 gallons of water
- (1) One 12' Dive Board, 6' Concrete Deck, 1,400 SF Sitting Area, 900 sq. ft. Concession/Restroom
- Pool Assessment Performed in 2015 by Waterscape Consultants, Inc. (Information available at City Hall)

### Proposed Project

- Would address issues identified by the Pool Assessment
- Approximately 5,000 sq. ft. of surface area
- Accommodate up to 330 swimmers
- Approximately 110,000 gallons of water
- 1,400 sq. ft. kiddie play area - This would be able to support about 25 to 30 kids playing at once
- 2400 sq. ft. splash pad - Approximately 30 spray devices . This splash pad will support 40 to 50 users
- Meets minimum requirements for International Swimming Pool Code and Public Swimming Pools

## BALLOT PROPOSITION D

THE ISSUANCE OF \$3,800,000 OF GENERAL OBLIGATION BONDS OF THE CITY OF PLAINVIEW, TEXAS, FOR CONSTRUCTION, RENOVATION, EXPANSION, IMPROVEMENT AND EQUIPMENT OF THE 16 TH STREET POOL FACILITY, AND THE LEVY OF A TAX IN PAYMENT THEREOF.



# Proposition E

## Downtown Improvements Broadway Street & 6th Street • \$1,480,000



Mobility



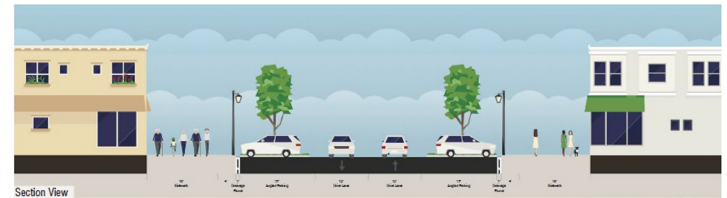
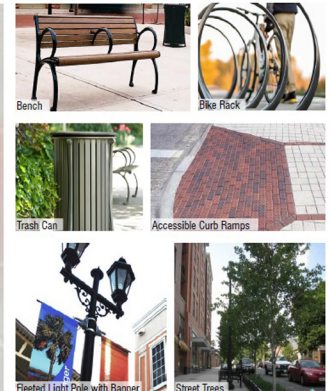
Plan View

### Pros

1. Lowest Cost Impact
2. Minimal Impact to Parade Route (24' Clear)
3. Increased Walkable Pedestrian Space Along Building Frontage
4. Increased Tree Canopy and Landscape Area
5. Minimal Reduction in Parking Spaces
6. Traffic Calming Slower Speeds
7. Improved Crosswalks and Accessible Routes

### Cons

1. Limited Tree Canopy
2. Narrower Travel Lanes
3. No Future Implementation of Bike Lanes



Section View

### Plainview Streetscape: Concept 2

Plainview, Texas

Kimley»Horn

### Current Conditions

- Downtown is Registered Commercial Historic District
- City is a part of the National Main Street Program for Downtown Revitalization
- City is a member of the Texas Downtown Association
- Completed Downtown Streetscape Design Plan in 2016

### Proposed Project

- Proposed Project Area:  
Broadway Street from 5th Street to 8th Street  
East 6th Street from Broadway to Ash Street
- Increased Walkable Pedestrian Space along Building Frontage
- Increased Tree Canopy and Landscape Area
- Minimum Impact on Parking Spaces
- Traffic Calming Bulb Outs
- Improved Crosswalks and Accessible Routes
- Comprehensive Plan Chapter 4 Housing and Neighborhoods; Chapter 7 Land Use and Character



## BALLOT PROPOSITION E

THE ISSUANCE OF \$1,480,000 OF GENERAL OBLIGATION BONDS OF THE CITY OF PLAINVIEW, TEXAS, FOR DOWNTOWN STREETSCAPE IMPROVEMENTS, AND THE LEVY OF A TAX IN PAYMENT THEREOF



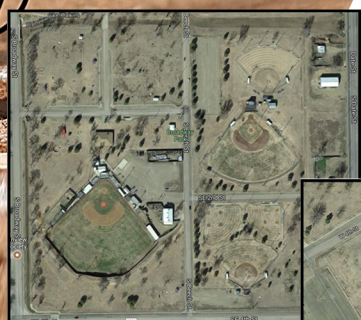
# Proposition F

## Baseball Field Improvements

Broadway Park/Regional Park • \$1,500,000



Quality of Life



The scope of this project will include the current baseball fields in Broadway Park that serve the youth baseball program and Softball fields in Regional Park that serve the adult softball program.

### Proposed Project

- Improved Concessions and Restroom facilities
- New stands with covered awnings
- Replace dugouts
- Replace fencing where needed
- Parking Improvements
- Parks Master Plan

## BALLOT PROPOSITION F

THE ISSUANCE OF \$1,500,000 OF GENERAL OBLIGATION BONDS OF THE CITY OF PLAINVIEW, TEXAS, FOR THE CONSTRUCTION, RENOVATION, IMPROVEMENT, EXPANSION AND EQUIPMENT OF BASEBALL/ SOFTBALL FACILITIES AT BROADWAY PARK AND REGIONAL PARK, AND THE LEVY OF A TAX IN PAYMENT THEREOF



# Tax Rate Impact

| Ballot Proposition                                      | Tax Rate Impact<br>(per \$100 valuation) | Monthly Costs for Homeowners<br>Home Value |                |                |
|---|--|--|----------------|----------------|
|   |  | \$ 50,000                                  | \$ 75,000      | \$ 100,000     |
| <b>Proposition A</b><br>24th Street Reconstruction      | \$ 0.060                                 | \$2.50                                     | \$3.75         | \$5.00         |
| <b>Proposition B</b><br>Police Department and City Hall | \$ 0.050                                 | \$2.09                                     | \$3.13         | \$4.18         |
| <b>Proposition C</b><br>Fire Station No. 2 Relocate     | \$ 0.044                                 | \$1.85                                     | \$2.78         | \$3.71         |
| <b>Proposition D</b><br>16th Street Pool Reconstruction | \$ 0.032                                 | \$1.32                                     | \$1.98         | \$2.65         |
| <b>Proposition E</b><br>Downtown Improvements           | \$ 0.012                                 | \$ 0.52                                    | \$ 0.78        | \$1.04         |
| <b>Proposition F</b><br>Baseball Field Improvements     | \$ 0.012                                 | \$ 0.51                                    | \$ 0.77        | \$1.02         |
| <b>Total Monthly Costs</b>                              | <b>\$ 0.211</b>                          | <b>\$8.79</b>                              | <b>\$13.19</b> | <b>\$17.59</b> |

\* 20 year Bond; Interest Rate – 3.4%



# Citizen Advisory Committee

A very special THANK YOU to the citizens who volunteered their time and energy to the Plainview Advisory Board. We appreciate your service to the community.



|                   |                        |
|-------------------|------------------------|
| Sherri Bohr       | John Juarez (Co-Chair) |
| Bob Copeland      | Lacy Kerbo             |
| Christine Cummins | Mark Kimball (Chair)   |
| Paul Drager       | Hari Krishna           |
| Richard Dye       | Jeremy Sandie Lawson   |
| Lionel Garcia     | Chris LeFevre          |
| Rick Garcia       | Julian Martinez        |
| Dovie Gilleland   | Margie Martinez        |
| Joe Gonzales      | Ricky Mason            |
| Billy Kyle Hamman | Virginio Ortega        |
| Ranada Jack       | Katherine Perez        |
|                   | Dora Sanchez           |
|                   | Shelby Shurbet         |
|                   | Ron Trusler            |
|                   | Michael Varner         |
|                   | Cathy Waggoner         |
|                   | Phyllis Wall           |
|                   | David Wilder           |
|                   | Jay Jay Wiseman        |





PLAINVIEW, TX

901 Broadway St. • Plainview, TX • 79072  
(806) 296-1100 • [plainviewtx.org](http://plainviewtx.org)